

Nestlé (Malaysia) Berhad (110925-W)

22-1, 22nd Floor, Menara Surian

No. 1, Jalan PJU 7/3

Mutiara Damansara

47810 Petaling Jaya

Selangor Darul Ehsan

Malaysia

Tel: (+603) 7965 6000

Fax: (+603) 7965 6767

Nestlé Consumer Services Free Phone: 1-800-88-3433

Facebook: <http://www.facebook.com/NestleMalaysia>

www.nestle.com.my

Dear Shareholder,
Nestlé (Malaysia) Berhad's 2011 Annual Report
comprises the following:

- Corporate Report
- Financial Report
- Creating Shared Value Report
- Nestlé di sisimu – 100 years in Malaysia

The Bahasa Malaysia version of this 2011 report will be
made available in CD-ROM format at the Company's
Annual General Meeting (AGM) on 26 April 2012.

For further information, please contact
Group Corporate Affairs Department (+603 7965 6000)
or visit our website at www.nestle.com.my

2011

ANNUAL REPORT



Good Food, Good Life



CELEBRATING
WELLNESS

100 *Nestlé* di sisimu.
tabun

100 YEARS OF NOURISHING MALAYSIA

100
tahun Nestlé di sisimu®

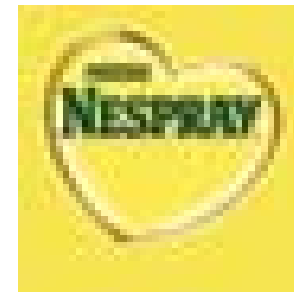
In the last 100 years,
we have won the trust
of Malaysians through
the quality and integrity
of our products.
We believe that we have
earned this trust by
successfully delivering
on our promise of
'GOOD FOOD, GOOD LIFE'
to our consumers.

Malaysians love their coffee,
especially one that is rich in taste
as well as history and culture.
To this day, NESCAFÉ continues
to work with farmers from all over
the world to bring you the
perfect cup of coffee.



1948

NESPRAY with 10 Signs
of Good Nutrition
provide ample goodness
for your child's healthy
overall growth.



1949

The generation of EVERYDAY
goodness comes with
15 minerals and vitamins
for your child's healthy growth
– "Warisan kelazatan,
pilihan bijak".



1956

The goodness of Inulin, a prebiotic,
is a type of soluble dietary fibre
that is non-digestible – a core ingredient
in NESTLÉ BLISS Yogurt Drink.
Inulin encourages the growth of
good bacteria in our large intestines,
resulting in improved gut health
and a better digestive system.



1984

Refreshing, delicious and
a whole lot of fun, MAT KOOL
is a popular choice among kids,
and is wholesome too, as it is made
with 100% natural flavouring.



1997

Only 2 glasses of OMEGA PLUS milk
(taken every day for 30 days)
is scientifically proven to lower
bad (LDL) cholesterol by 7%.



1999



1912

Malaysia's very first Nestlé
product came in the form of
the now famous MILKMAID
Condensed Milk.



1949

Malaysia can be rightfully
called 'Land of MILO' because
it is the world's largest consumer
of the beverage, nourishing
ambitions and encouraging
grassroot sports.



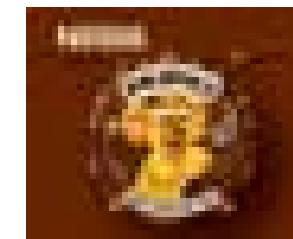
1955

A favourite nutritious breakfast
cereal for loyal consumers
from every age group, it can be
customised to fit your every whim
and fancy. Taken as either a drink,
porridge or added with fruits
and honey, it remains constantly
delicious and aromatic.



1964

"Cepat dimasak, sedap dimakan"
– Sing this jingle and most
Malaysians will be pleased
to name you the household brand
that they know so well, "MAGGI".



1986

NESTLÉ KOKO KRUNCH packs the
ultimate chocolate experience for
children, combining the pleasure of
chocolate with the benefits of whole
grain. The 10 vitamins & minerals,
protein and fibre in NESTLÉ KOKO
KRUNCH makes it a wholesome
breakfast cereal for every child.



1998

With its catchy tagline
"Have a break, have a KIT KAT",
KIT KAT has stayed true to its fun
promise of giving Malaysians
a break from the daily grind
with these delicious wafer fingers
in chocolate milk.



2011

This smooth operator is ready
to work with you and brew up
something to remember
– a brand new coffee experience.
NESCAFÉ DOLCE GUSTO
– it's the perfect Italian café-style
coffee, now in Malaysians' homes
since October 2011.